

2026 10th International Conference on Reliability Engineering (ICRE 2026)

🔗🔗🔗 July 19-21, 2026 | Hangzhou, China

Simplified Version

Sponsored by



LASAR³

Co-sponsored by



杭州市北京航空航天大学国际创新研究院
(北京航空航天大学国际创新学院)
HANGZHOU INTERNATIONAL INNOVATION INSTITUTE OF BEIHANG UNIVERSITY



哈爾濱工業大學
HARBIN INSTITUTE OF TECHNOLOGY

Technical Sponsor



Table of Contents

▶ Organizing Committee	3
▶ Welcome Message	6
▶ Guideline	7
For Onsite Participants	7
For Online Participants	10
▶ Conference Schedule Overview	12
Sunday, July 19, 2026	12
Monday, July 20, 2026	13
Tuesday, July 21, 2026	17

► Organizing Committee

■ General Chairs

Enrico Zio, Mines Paris-PSL University, France and Politecnico di Milano, Italy
R. Kang, Beihang University, China

■ Advisory Committee

Janet Lin, Mälardalen University, Sweden
Piero BARALDI, Politecnico di Milano, Italy
Francesco Di Maio, Politecnico di Milano, Italy
Wei Wang, City University of Hong Kong, China
Zhiguo Zeng, Centralesupélec, Université Paris-Saclay, France
Yiping Fang, Centralesupélec, Université Paris-Saclay, France
Sameer Al-Dahidi, German Jordanian University, Jordan
Guofu Zhai, Harbin Institute of Technology, China
David Coit, Rutgers University, USA
Shaoping Wang, Beihang University, China
Liudong Xing, University of Massachusetts, USA
Mohammad Pourgol, University of Maryland, USA
Xiaoyang Li, Beihang University, China

■ Technical Program Committee Chairs

Yang Hu, Beihang University, China
Ibrahim Ahmed, Politecnico di Milano, Italy
Masoud Naseri, Tromso University, Norway
Zhen Chen, Shanghai Jiao Tong University, China

■ Organizing Chairs

Tianpei Zu, Beihang University, China
Huixing Meng, Beijing Institute of Technology, China

■ Organizing Committee Members

Yuhan Kang, Yixuan Wu, Junnan Yang, Xiaoyu Jiang, Zhouteng Ye, Hao Yu, Di Su, Yanhui Lin, Jie Liu

■ Publicity Co-chairs

Chenyang Lai, Politecnico di Milano, Italy
Yixuan Wu, Beihang University, China
Chao Zhao, Northeastern University, China

■ Publication Chairs

Yang Li, Beihang University, China

Lanxiang Liu, Harbin Institute of Technology, China

Danyang Han, Beihang University, China

■ TPC

Frank Coolen, Durham University, UK

Zhengeng Ye, Zhengzhou University, China

Francesco Mercaldo, University of Molise, Italy

Zhigang Tian, University of Alberta, Canada

John Andrews, University of Nottingham, UK

Bin Liu, University of Strathclyde, Scotland

Yew Kee Wong Eric, Hong Kong Chu Hai College, China

PrYu Yu, North China Electric Power University, China

Chen Juan, Beihang University, China

Shuo Sheng, Multi modal Large Model Computing Network Research Center, China

Huai Su, China University of Petroleum-Beijing, China

Jiejuan Tong, Tsinghua University, China

Shi-Shun Chen, Beihang University, China

Bin Wang, WuHan University of Technology, China

Youchao Sun, Nanjing University of Aeronautics and Astronautics, China

Liao Zhang, Nanyang Institute of Technology, China

Benoit Iung, Lorraine University, France

Xiaoyang Li, Beihang University, China

Dariusz Mazurkiewicz, Lublin University of Technology, Poland

Krzysztof Woloszyk, Gdansk University of Technology, Poland

Di Zhou, Donghua University, China

David Coit, Rutgers University, United States

Xiujie Zhao, Tianjin University, China

Elena Gómez-Martínez, Universidad Complutense de Madrid, Spain

José Ignacio Requeno Jarabo, Universidad Complutense de Madrid, Spain

Haihua Chen, University of North Texas, USA

Elena Zaitseva, University of Zilina, Slovakia

İsmail Kayahan, Işık University, Turkey

Fevzi Belli, University of Paderborn, Germany

Jie Mi, Beijing Information Science and Technology University, China

José Ignacio Requeno, Universidad Complutense de Madrid, Spain

Jingkui Li, Shenyang Aerospace University, China

Lechang Yang, University of Science and Technology Beijing, China

Fehmi Jaafar, Quebec University, Canada

Sokratis Katsikas, NTNU: Norwegian University of Science and Technology, Norway

Nicolae Brinzei, University of Lorraine, France

Shoubao Li, PipeChina Institute of Science and Technology Tianjin, China

Hongru Zhao, Tsinghua University, China

Qidi Zhou, China Academy of Electronics and Information Technology, China

Wenjie Dong, Nanjing University of Aeronautics and Astronautics, China

Yanning Sun, Shanghai University, China
Yaqiong Lv, Wuhan University of Technology, China
Rui Peng, Beijing University of Technology, China
Yifan Li, Wuhan University of Technology, China
Ke Feng, Xi'an Jiaotong University, China
Te Han, Beijing Institute of Technology, China
Jianhai Yan, University of Shanghai for Science and Technology, China
Guanqi Fang, Zhejiang Gongshang University, China
Yian Wei, City University of Hong Kong (Dongguan), China
Wenhan Fu, University of Shanghai for Science and Technology, China
Yuhua Yin, Xihua University, China
Shaomin Wu, University of Kent, UK
Tangfan Xiahou, University of Electronic Science and Technology of China, China
Xiaoyan Zhu, University of Chinese Academy of Sciences, China
Haoxuan Zhou, Kunming University of Science and Technology, China
Shun-Peng Zhu, University of Electronic Science and Technology of China, China
Qingqing Zhai, Shanghai University, China
Hong Xia, Harbin Engineering University, China
Yi Liu, Zhejiang University of Technology, China
Qingan Qiu, Beijing Institute of Technology, China
Linmin Hu, Yanshan University, China
Arda Vanli, Florida State University, USA
Yongkuo Liu, Harbin Engineering University, China
Zhaoqiang Wang, Rocket Force University of Engineering, China
Likang Zhang, China Academy of Aerospace Standardization and Product Assurance, China
Cong Peng, Tsinghua University, China
Zhichao Wang, Tsinghua University, China
Yazhou Xu, Army Aviation Academy, China
Zhe Lv, Harbin Institute of Technology, China
Guo Li, Beihang University, China

► Welcome Message

2026 10th International Conference on Reliability Engineering (ICRE 2026) will be held on July 19-21, 2026 in Hangzhou, China. It's sponsored by **Shenzhen Weimin Reliability Systems Engineering Institute**; and **Laboratory of Analysis of Systems for the Assessment of Reliability, Risk and Resilience (LASAR3) at Politecnico di Milano, Italy**. Co-sponsored by Beihang University, China; Harbin Institute of Technology, China. Technically sponsored by IEEE Reliability Society. It centers on the theme "Reliability Engineering for a Sustainable Future: From Classical Reliability to Intelligent, Resilient Systems".

The conference gathers global researchers, engineers, industry professionals, and academics to share the latest advancements, practical applications, and future trends in reliability engineering. Amid global sustainable development and technological transformation, it focuses on the evolution from classical models to AI-driven, resilient systems—addressing core challenges in complex scenarios such as aerospace, industrial manufacturing, and smart infrastructure. It serves as a key platform for academic–industry exchange and collaboration to advance reliable and sustainable systems.

We are deeply grateful to our esteemed authors for their high-quality submissions, our dedicated reviewers for their rigorous evaluations, and our session chairs for guiding productive discussions. We also extend our sincere appreciation to our sponsors and partners, whose generous support has been instrumental in making this event possible.

Beyond the technical sessions, we encourage all participants to engage in networking opportunities, fostering new collaborations that transcend geographical and disciplinary boundaries. It is through such connections that transformative ideas take shape and impactful innovations emerge.

We hope that ICRE 2026 will inspire lively debates, spark new research directions, and strengthen the global community of professionals dedicated to advancing reliability engineering and resilient systems.

Thank you for being part of this exciting journey. We wish you a stimulating and rewarding conference experience!

ICRE 2026 Conference Committees

► Guideline

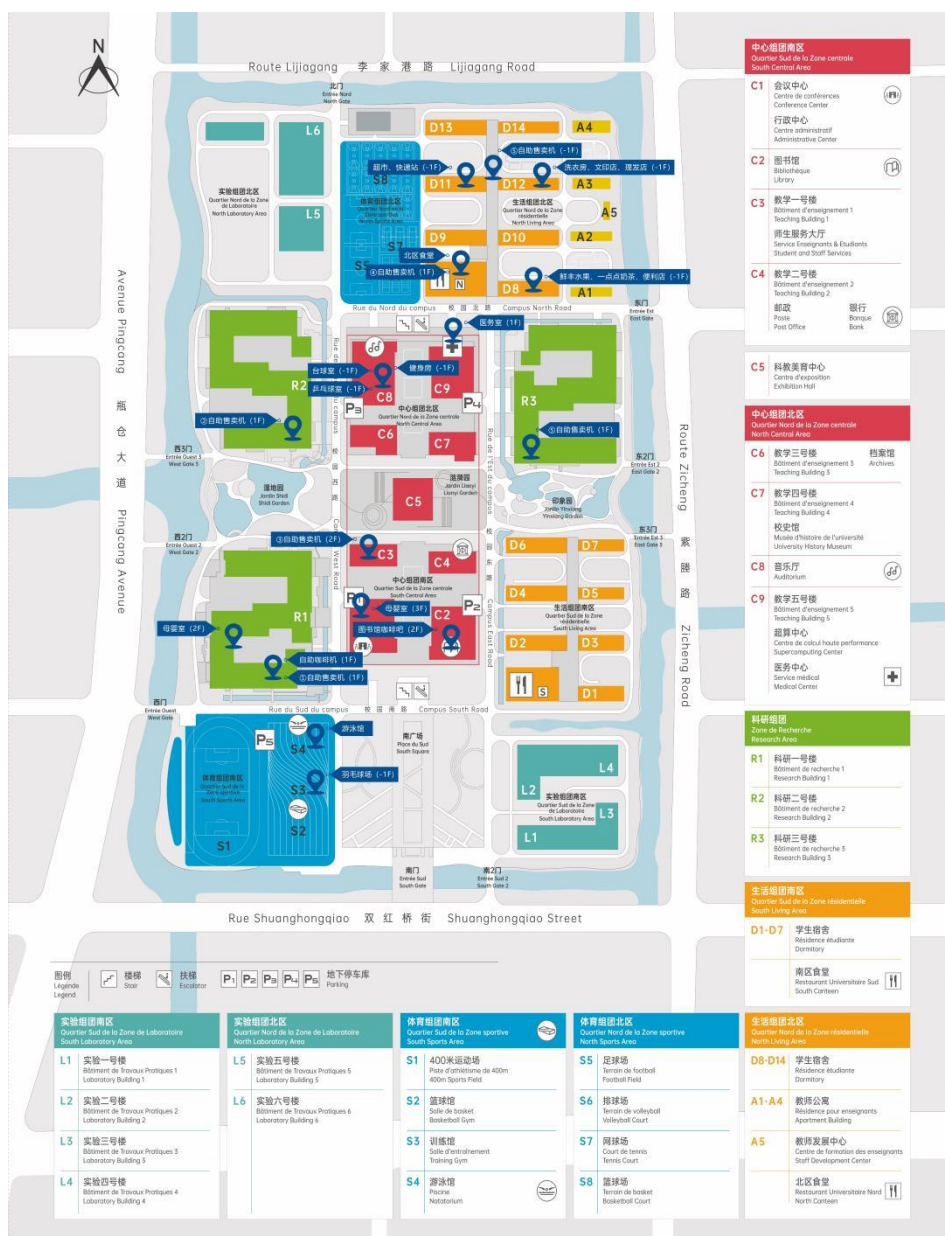
For Onsite Participants

Time Zone

- Beijing standard time: UTC/GMT+8

Conference Venue (July 19 & 21, 2026)

- 杭州市北京航空航天大学国际创新研究院（北京航空航天大学国际创新学院）
Hangzhou International Innovation Institute of Beihang University (Beihang International Innovation Academy)
- 地址：杭州市余杭区瓶窑镇双红桥街 166 号
No. 166, Shuanghongqiao Street, Pingyao Town, Yuhang District, Hangzhou, Zhejiang, China





Lodging Accommodation

- 开元曼居臻选·杭州良渚古城遗址店 Manju Prestige Hotel (Hangzhou Liangzhu Ancient City Ruins)
- 地址：杭州市余杭区瓶窑镇前程路 36 号 (No. 36-1 Qiancheng Road, Yuhang District, Hangzhou, China)
- 房间类型：曼享标/大，曼居标/大 (Superior Twin / Superior Twin)
- 协议价格：328 元/间/双早，358 元/间/双早 (RMB 328 (double breakfast) / RMB 358 (double breakfast) per room per night)
- 订房方式：18989876864，余晓青；转预订部，报“参加 ICRE 2026 会议” (Call +86-18989876864 → Reservation Dept., quote “ICRE 2026”)


Transportation


From Hangzhou Xiaoshan International Airport-从杭州萧山国际机场出发

 Metro + Bus (1 hr 20 mins)
 Take Metro Line 19 (towards West Railway Station) → Get off at West Railway Station (14 stops, ~54 mins) → Transfer to Bus 420 (towards Maoyuanling Bus Station, 4 stops) → Get off at Beihang Sino-French Aviation Academy East stop → Walk about 530m (7 mins) to the institute.


 By Taxi (1 hr 15 mins)
 About 64 km via Airport Expressway or G60 Expressway.


From Hangzhou East Railway Station-从杭州东站出发

 Metro + Bus (1 hr 15 mins)
 Take Metro Line 19 (towards West Railway Stn, Exit H2) → Get off at West Railway Stn (9 stops, 32 min) → Bus 420 (towards Maoyuanling, 4 stops) → Get off at Beihang Sino-French Aviation Academy East → Walk 530m (7 min).

 By Taxi (53 mins)
 About 36.6 km.

From Hangzhou West Railway Station (Closest, Recommended)-从杭州西站出发

 Metro + Bus (33 mins, ¥7)
 Take Metro Line 3 (towards Xingqiao) → Exit A at Wenyi West Road (2 stops, ~5 min) → Bus 420 (towards Maoyuanling, 6 stops) → Get off at Beihang Sino-French Aviation Academy East → Walk 530m (7 min).

 By Taxi (20 mins, ¥20–30)
 About 11 km – the most convenient option.

▶ Guideline

For Onsite Participants

Sign In & Material Collecting

Date: July 19th, 2026

- Time: 10:00-17:00
- Venue: Hangzhou International Innovation Institute of Beihang University (Beihang International Innovation Academy) **Administrative Hall, 1st Floor, Convention Center**

Instructions for Presentation

- The duration of session keynote slot is 30 minutes (including 2-3 minutes Q&A).
- The duration of invited speech slot is 20 minutes (including 2-3 minutes Q&A).
- The duration of oral presentation slot is 15 minutes (including 2-3 minutes Q&A).
- Your punctual arrival and active involvement in each session will be highly appreciated.
- Get your presentation PPT or PDF files prepared and backed up.
- The regular oral presentation time arrangement is for reference only. In case any absence or some presentations are less than 15 minutes, please join your session earlier.
- Devices Provided by the Conference Organizer: Laptop (with MS-Office & Adobe Reader), projector & screen, laser pointer.

Notes and Tips

- Please show the meal ticket to the staff when you enter the dining hall.
- For security purpose, all participants are required to wear name badge to all sessions and social function.
- Entrance into sessions is restricted to registered delegates only.
- For your personal and property safety, please take care of your belongings in public area. Conference does not assume any responsibility for loss of personal belongings of participants.

Emergency Numbers

Medical Emergency	120
Police	110
Fire	119

► Guideline

For Online Participants

Time Zone

- Beijing standard time: UTC/GMT+8
- Please carefully check your presentation time and join the conference 10 minutes in advance.

ZOOM Download Link

- <https://zoom.us/download> (Oversea)
- <https://zoom.com.cn/download> (Author in China)

Meeting Rooms

- **ZOOM Link A:** <https://us02web.zoom.us/j/89836137548>, ZOOM ID: 89836137548
- **ZOOM Link B:** <https://us02web.zoom.us/j/84283216229>, ZOOM ID: 84283216229
- Only one password for all online room. Password: 071921

Test Your Presentation

Date: 14:00-17:00 July 19th, 2026

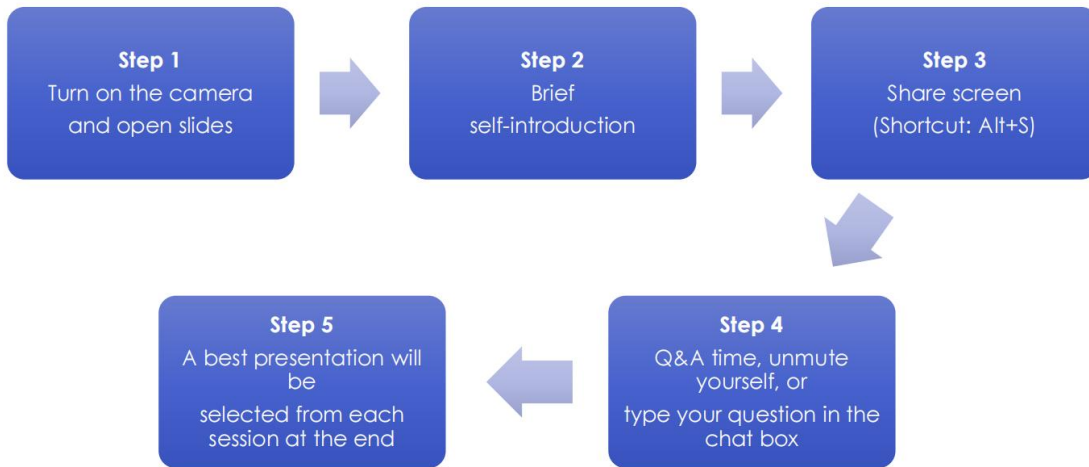
Prior to the formal meeting, online presenters shall join the test room to ensure everything is on the right track. Please check your test Zoom Meeting ID on this program.

Oral Presentation

- Timing: a maximum of 15 minutes in total, including 2-3 minutes for Q&A. Please make sure your presentation is well timed.
- Please join the meeting room 10 minutes in advance.
- Stay online during Keynote & Invited speeches and your own sessions.
- English Only during the conference.

Rename your screen name before entering the room	Example
Authors: Paper ID-Name	RExxx-SanZhang
Listener: Listener Number-Name	Listener-San Zhang
Keynote Speaker: Keynote-Name	Keynote-San Zhang
Committee Member: Position-Name	Committee-San Zhang

Presentation Process



Conference Recording

- The conference online part will be recorded. We appreciate your proper behavior and appearance.

ICRE 2026 扫码下载会议通知

Scan to Download ICRE 2026
Conference Notice



ICRE 2026 扫码观看会议照片

Scan to View ICRE 2026 Event
Photos



ICRE2026 扫码添加会议秘书

Scan to Add ICRE 2026
Conference Secretary



► Conference Schedule Overview

Sunday, July 19, 2026 <UTC+8>

Time	Schedule	
10:00-17:00	<p>Onsite Registration Sign-in & Collecting Materials</p>	<ul style="list-style-type: none"> ➤ 杭州市北京航空航天大学国际创新研究院（北京航空航天大学国际创新学院）会议中心 1 楼行政大厅 Hangzhou International Innovation Institute of Beihang University (Beihang International Innovation Academy) Administrative Hall, 1st Floor, Convention Center ➤ Address: No. 166, Shuanghongqiao Street, Pingyao Town, Yuhang District, Hangzhou, Zhejiang, China
13:30-18:00	<p>Onsite Special Exhibition</p>	<ul style="list-style-type: none"> ➤ 美好的可靠性——为民可靠性茶话会（杭州站）确信可靠性专题 ➤ "Beautiful Reliability" – Weimin Reliability Tea Talk (Hangzhou Station): A Special Session on Assurance Reliability ➤ 地址：杭州市北京航空航天大学国际创新研究院（北京航空航天大学国际创新学院）会议中心 1 楼行政大厅 ➤ Address: Hangzhou International Innovation Institute of Beihang University (Beihang International Innovation Academy) Administrative Hall, 1st Floor, Convention Center
14:00-17:00	<p>Online Test for Online Participants</p>	<p>ZOOM Link: https://us02web.zoom.us/j/89836137548</p> <p>ZOOM ID: 89836137548</p> <p>Password: 071921</p>

► Conference Schedule Overview

Monday, July 20, 2026 <UTC+8>

签到 Sign-in & Collecting Materials	► 会议中心 1 楼行政大厅 Administrative Hall, 1st Floor, Convention Center
--------------------------------------	--

Morning-Opening Ceremony & Plenary Speeches

<h2>Opening Ceremony</h2> <p><i>Host: TBA</i></p> <p>Venue: Administrative Hall, 1st Floor, Convention Center 会议中心</p>	
Opening Remarks 09:00-09:05	<i>TBA</i>
Welcome Message 09:05-09:10	<i>TBA</i>
09:10-09:15	Group Photo
<h2>Plenary Speeches</h2>	
Plenary Speaker I 09:15-9:55	Prof. Steven Li, Western New England University, USA <i>Title: How Much Confidence Do We Have for GenAI-Based Reasoning – A Perspective from Reliability Inference</i>
Plenary Speaker II 09:55-10:35	Prof. Francesco Di Maio, Politecnico di Milano, Italy <i>Title: TBA</i>
Coffee Break ☕ 10:35-11:00	
Plenary Speaker III 11:00 – 11:40	Prof. Shaoping Wang, Beihang University, China <i>Title: TBA</i>
Lunch Time 🍴 11:50-13:30	
Venue: North Canteen 用餐地址: 北区食堂	

Afternoon-Session Keynote Speeches

Venue: Administrative Hall, 1st Floor, Convention Center | 会议中心

Session Keynote Speeches

Host: TBA

<p>Session Keynote Lecturer I 13:30 – 14:00</p>	<p>Prof. Yanfu Li, Tsinghua University, China <i>Title: TBA</i></p>
<p>Session Keynote Lecture II 14:00 – 14:30</p>	<p>Prof. Zhiguo Zeng, Université Paris-Saclay, France <i>Title: TBA</i></p>
<p>Session Keynote Lecture III 14:30 – 15:00</p>	<p>Prof. Qin Zhang, Tsinghua University, China <i>Title: Application of Trustworthy AI in Fault Diagnosis of Process Systems</i></p>
<p>Session Keynote Lecture IV 15:00-15:30</p>	<p>Assoc. Prof. Hongtian Chen, Shanghai Jiao Tong University <i>Title: Mamba-Based Fault Diagnosis for Time-Varying Systems and Its Application to the Kunlong AG600</i></p>

Coffee Break ☕ 15:30—16:00

Onsite Oral Sessions

<p>16:00-17:50</p>	<p>Onsite Oral 1-SS10 Topic: Reliability, Safety and Uncertainty Management in Aviation and New Energy Systems <i>Session Chair: TBA</i> Session Keynote Lecturer-Lechang Yang, Invited Speaker-Zhe Wang, RE2046, RE3105, RE3135-A, RE3120</p>	<p>1003</p>
<p>16:00-18:10</p>	<p>Onsite Oral 2 Topic: Intelligent Diagnosis and Data Model Analysis in AI Driven Electronic and Signal Systems</p>	<p>1004</p>

	<p><i>Session Chair: TBA</i></p> <p>Invited Speaker-Bokai Zheng, Invited Speaker-Shengyu Tao, RE5247, RE5248, RE1016, RE1018, RE1031, RE1026</p>	
16:00-18:15	<p>Onsite Oral 3-SS19</p> <p>Topic: Integrated Technology of Intelligent Diagnosis, Fault Simulation & Injection and Testability Design</p> <p><i>Session Chair: TBA</i></p> <p>Session Keynote Lecturer-Junyou Shi, RE3156, RE3145, RE4177, RE4214, RE5242, RE4215, RE5259</p>	1005
16:00-17:50	<p>Onsite Oral 4-SS13</p> <p>Topic: Intelligent Operation & Maintenance and Reliability for Ships and Marine Engineering Equipment</p> <p><i>Session Chair: TBA</i></p> <p>Invited Speaker-Bin Wang, RE3106, RE3144-A, RE3142-A, RE4173, RE5253, RE4166</p>	1007
16:00-17:50	<p>Onsite Oral 5-SS1</p> <p>Topic: Industrial AI-Driven Operation and Maintenance</p> <p><i>Session Chair: TBA</i></p> <p>Session Keynote Lecturer-Pei Lei, Invited Speaker-Yan-Hui Lin, RE1005-A, RE2043-A, RE1015-A, RE2040</p>	1009
16:00-18:05	<p>Onsite Oral 6-SS2</p> <p>Topic: Multiphysics Modeling, Uncertainty Quantification and Intelligent Health Management for Highly Reliable Components and Systems</p> <p><i>Session Chair: TBA</i></p> <p>Invited Speaker-Qingqing Zhai, RE2052-A, RE2092, RE2049-A, RE5245, RE5244, RE4216, RE3101-A</p>	1011
16:00-17:50	<p>Onsite Oral 7-SS8</p> <p>Topic: Belief Reliability Theory and Applications: Recent Advances, Methods and Practices</p>	1012

	<p>Session Chair: TBA Invited Speaker-Shaohua Zhou, RE1020, RE2072-A, RE3114, RE5261, RE3128, RE5256</p>	
16:00-18:00	<p>Onsite Poster Session 1</p> <p>Topic: Reliability Analysis and Equipment Fatigue Life Prediction Method Based on Multi Physics Information Fusion</p> <p>Session Chair: TBA</p> <p>RE1023, RE3134, RE4186, RE2041, RE5235, RE2063, RE2064, RE4184, RE4213, RE4228, RE4204, RE5246, RE1035-A, RE3141, RE3161, RE1024, RE3118, RE3107, RE5252, RE3158, RE5278</p>	1006
<p>Dinner Time 🍴 19:00 – 21:00</p> <p>Venue: Jinshanghua, 2nd Floor (Peony Hall) 晚宴: 锦上花 二楼牡丹厅</p> <p>地址: 浙江省杭州市余杭区瓶窑镇前程路 36 号</p> <p>Address: No. 36 Qiancheng Road, Pingyao Town, Yuhang District, Hangzhou, Zhejiang, China</p>		

► Conference Schedule Overview

Tuesday, July 21, 2026 <UTC+8>

Morning- Onsite Oral Presentations

Onsite Oral Sessions		
8:30-10:30	<p>Onsite Oral 8-SS1 Topic: Industrial AI-Driven Operation and Maintenance <i>Session Chair: TBA</i></p> <p>RE3127, RE3150, RE4176, RE1009, RE2051-A, RE3148, RE2047, RE2057</p>	1003
8:30-10:15	<p>Onsite Oral 9-SS6 Topic: Explainable AI for Prognostics and Health Management of Aerospace and Avionic Systems <i>Session Chair: TBA</i></p> <p>RE2069, RE3137, RE2080, RE3139, RE4198, RE4193, RE4196</p>	1004
8:30-10:30	<p>Onsite Oral 10-SS3 Topic: Physics-Informed Machine Learning for Prognostics and Health Management of Industrial Equipment <i>Session Chair: TBA</i></p> <p>RE4181, RE5257, RE5274, RE3151, RE4179, RE2050, RE4178-A, RE3110-A</p>	1005
8:30-10:30	<p>Onsite Oral 11-SS22 Topic: Reliable Fault Diagnosis and Safety Fault-Tolerant Control for Complex Systems <i>Session Chair: TBA</i></p> <p>RE5269, RE5270, RE5271, RE1034, RE1002, RE1036-A, RE5280-A, RE5240-A</p>	1007

<p>8:30-10:00</p>	<p>Onsite Oral 12-SS23</p> <p>Topic: Integrated Support Engineering and Maintenance Optimization of Complex Systems</p> <p><i>Session Chair: TBA</i></p> <p>RE5236, RE1010, RE4210, RE2087, RE1008-A, RE2094</p>	<p>1009</p>
<p>8:30-10:30</p>	<p>Onsite Oral 13-SS10</p> <p>Topic: Reliability, Safety and Uncertainty Management in Aviation and New Energy Systems</p> <p><i>Session Chair: TBA</i></p> <p>RE3143, RE3103, RE3163, RE3157, RE4165, RE2055, RE1021, RE1033</p>	<p>1011</p>
<p>8:30-10:30</p>	<p>Onsite Poster Session 2</p> <p>Topic: Artificial Intelligence Technology for Fault Diagnosis, Return Model and Risk Prediction in Complex Engineering Systems</p> <p><i>Session Chair: TBA</i></p> <p>RE2042, RE2068, RE5267, RE4187, RE4188, RE5237, RE5238, RE4192, RE2058, RE1025, RE2081, RE2082, RE2093, RE2075, RE3099, RE4232, RE5277, RE2084, RE4231, RE5255, RE5281</p>	<p>1006</p>
<p>Break Time ☕ 10:30-10:40</p>		

► Conference Schedule Overview

Tuesday, July 21, 2026 <UTC+8>		
Onsite Oral Sessions		
10:40-12:40	<p>Onsite Oral 14-SS14</p> <p>Topic: Resilience and Risk Mitigation of Industrial Cyber-Physical Systems Against Cascading Failures</p> <p><i>Session Chair: TBA</i></p> <p>RE4229, RE4191, RE4185, RE2045-A, RE2076, RE3116-A, RE5265, RE5282</p>	1003
10:40-12:10	<p>Onsite Oral 15-SS20</p> <p>Topic: Structural Risk Assessment, Resilience Improvement and Sustainability under Disasters</p> <p><i>Session Chair: TBA</i></p> <p>RE4212-A, RE5249-A, RE3123, RE1006-A, RE1022, RE1011</p>	1004
10:40-12:10	<p>Onsite Oral 16-SS24</p> <p>Topic: Reliability and Fragility Assessment of Micro-Reactor Systems and Components under Seismic and Multi-Physics Loads</p> <p><i>Session Chair: TBA</i></p> <p>RE4208-A, RE5268, RE5264, RE5276, RE5260, RE2071</p>	1005
10:40-12:40	<p>Onsite Oral 17-SS9</p> <p>Topic: Physics-Informed Digital Twin for Reliability Assessment of Nuclear and Renewable Energy Systems</p> <p><i>Session Chair: TBA</i></p> <p>RE2067, RE3147, RE2056, RE5266, RE1017, RE3130, RE5262-A, RE5275</p>	1007
10:40—12:40	<p>Onsite Oral 18-SS7</p> <p>Topic: Artificial Intelligence for Fault Diagnosis and Prognostics of Complex Engineering Systems</p>	1009

	<p><i>Session Chair: TBA</i></p> <p>RE2062, RE2089, RE3112, RE3160, RE3136, RE4190, RE3149, RE5250</p>	
10:40-12:40	<p>Onsite Oral 19</p> <p>Topic: Data-Driven Intelligent Methods and Reliability Assurance for Complex Engineering Systems</p> <p><i>Session Chair: TBA</i></p> <p>RE5241-A, RE3159, RE2054, RE3162-A, RE2065, RE5272, RE1013, RE4174</p>	1011
10:40-12:40	<p>Onsite Poster Session 3</p> <p>Topic: Abnormal monitoring, elastic modeling and reliability assessment of complex systems</p> <p><i>Session Chair: TBA</i></p> <p>RE1027, RE1039, RE1003, RE2073, RE3115, RE3126, RE3152, RE4202, RE4221, RE4182, RE4219, RE4206, RE4233, RE4224, RE4225, RE1007, RE4197, RE4223, RE4194, RE4195, RE4220</p>	1006
<p>Lunch Time 🍴 12:50-14:00</p> <p>Venue: North Canteen 午餐: 北区食堂</p>		

► Conference Schedule Overview

Tuesday, July 21, 2026 <UTC+8>

Morning- Online Oral Presentations

Online Oral Presentation		
ROOM A ZOOM Link: https://us02web.zoom.us/j/89836137548 ZOOM ID: 89836137548 Password: 071921		
ROOM B ZOOM Link: https://us02web.zoom.us/j/84283216229 ZOOM ID: 84283216229 Password: 071921		
10:00-11:45	Online Oral Session 1-SS7 <i>Session Chair: TBA</i> Topic: Artificial Intelligence for Fault Diagnosis and Prognostics of Complex Engineering Systems RE2088, RE1019, RE2070, RE4167, RE3154, RE4180, RE4183	ROOM A
10:00-11:15	Online Oral Session 2-SS19 <i>Session Chair: TBA</i> Topic: Integrated Technology of Intelligent Diagnosis, Fault Simulation & Injection and Testability Design RE3153, RE4226, RE5251, RE4230, RE4227	ROOM B
Break Time ☕ 10:45-13:00		

► Conference Schedule Overview

Tuesday, July 21, 2026 <UTC+8>

Afternoon- Online Oral Presentations

Online Oral Presentation		
ZOOM A ZOOM Link: https://us02web.zoom.us/j/89836137548 ZOOM ID: 89836137548 Password: 071921		
ZOOM B ZOOM Link: https://us02web.zoom.us/j/84283216229 ZOOM ID: 84283216229 Password: 071921		
13:00-14:30	Online Oral Session 3-SS17 <i>Session Chair: TBA</i> Topic: Advanced Statistical Methods for Reliability Engineering Research and Practic RE4172, RE4171, RE3131, RE4189, RE3121, RE3122	ROOM A
13:00-14:15	Online Oral Session 4 <i>Session Chair: TBA</i> Topic: Reliability Assessment of Digital Twins and Simulation Driven Systems RE2060, RE2059, RE2048-A, RE5273, RE2074	ROOM B